



GMT MONTHLY MEMBERSHIP PROGRESS REPORT

Results as of: 6/30/2020

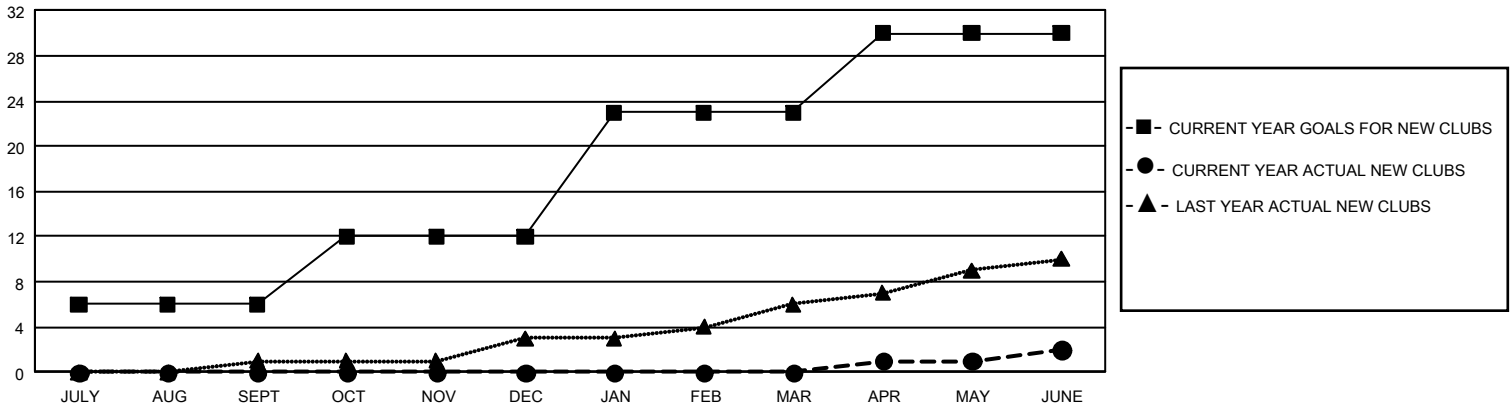
GMT Constitutional Area 1, Group M

GMT: OPEN

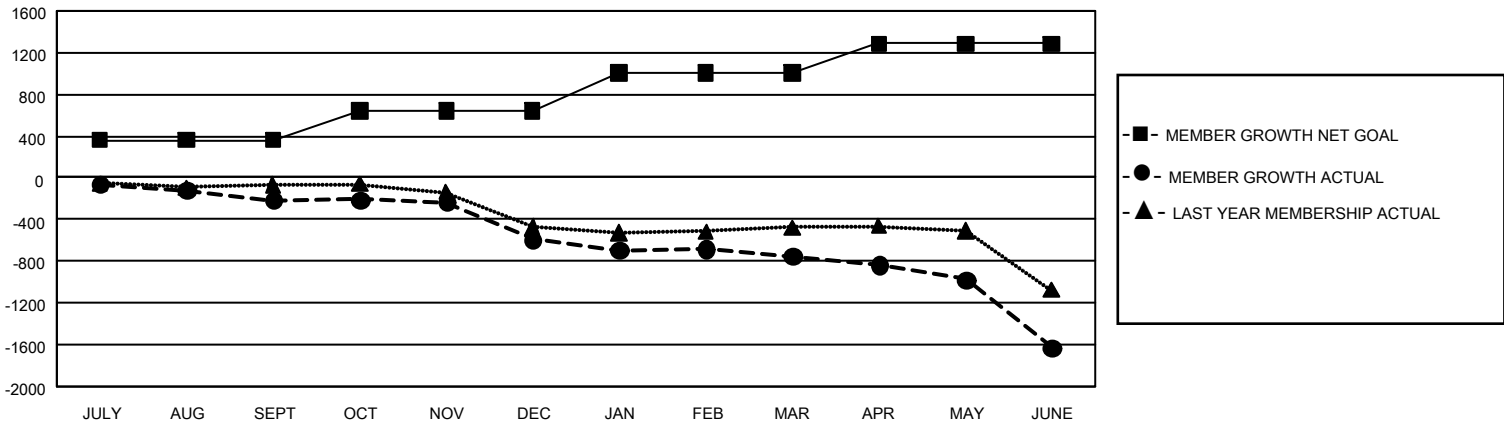
REPORT DOES NOT INCLUDE CLUBS IN UNDISTRICTED AREAS.

Clubs				Members			
RESULTS FOR 2019-2020				RESULTS FOR 2019-2020			
QUARTER	NEW CLUB GOAL	NEW CLUBS	DROPPED CLUBS	QUARTER	MEMBER GROWTH NET GOAL	MEMBER GROWTH ACTUAL	DROPPED MEMBERS ACTUAL (including transfers)
JULY/AUG/SEPT	18	0	6	JULY/AUG/SEPT	1,080	536	623
OCT/NOV/DEC	18	0	8	OCT/NOV/DEC	855	477	767
JAN/FEB/MAR	33	0	5	JAN/FEB/MAR	1,080	561	628
APR/MAY/JUNE	21	2	9	APR/MAY/JUNE	849	262	1,090

GOALS AND ACTUAL NEW CLUBS CUMULATIVE



GOALS AND ACTUAL MEMBERS CUMULATIVE



DROPPED CLUBS: 28	449 CLUBS OF 847 ADDED 1 OR MORE NEW MEMBERS	<u>GENDER DISTRIBUTION</u> MALE 11,370 (64.64%) FEMALE 6,221 (35.36%)
<u>DROPPED MEMBERS</u> DECEASED 357 CLUB CANCELLED 213 OTHER 2,537 <hr/> TOTAL 3,107	CLICK HERE FOR CUMULATIVE MEMBERSHIP DATA	TOTAL FAMILY UNIT MEMBERS 3,724 FAMILY MEMBERS PAYING HALF DUES 1,908